

ArcGIS® Desktop Extension

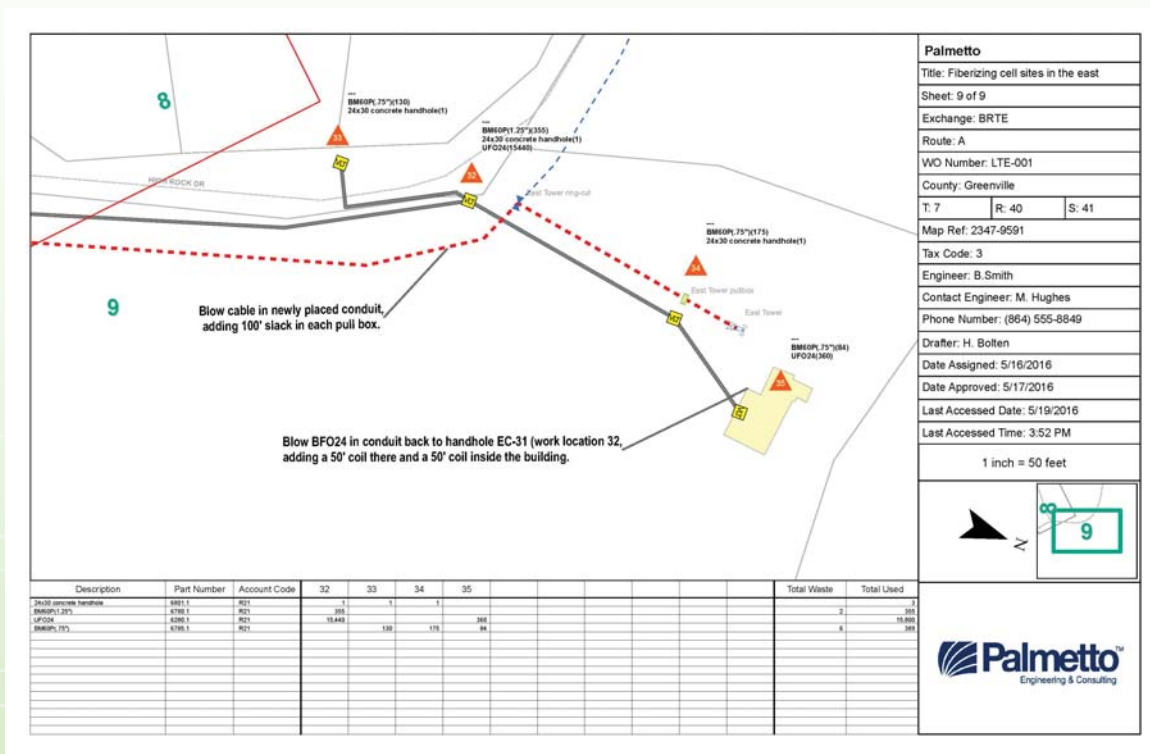
compatible with all current versions of ArcGIS

- ▲ Project Planner is an ArcGIS extension that combines design, construction, staking, reporting, and project cost estimations into one package. Project Planner can be utilized alongside CrescentLink, or as a standalone ArcMap extension.
- ▲ Project Planner organizes work into projects, which can include service orders, work orders, job orders, or any other task your organization may use.
- ▲ Standard output files from Project Planner include PDF, Microsoft Excel, and CSV; making it easy to share project related data. Project Planner puts all of your project information right at your fingertips.



Operation Name	Description	Part Number	Account Code	Quantity Used	Quantity Waste	Cost per unit	Unit of Measure	Preferred Vendor
32	UFO24	6280.1	R21		15440	0	0.8 foot	
32	24x30 concrete handhole	6801.1	R21	1	0	360	each	
33	BM60P(1.25")	6780.1	R21	355	2	2.85	foot	
33	24x30 concrete handhole	6801.1	R21	1	0	360	each	
33	BM60P(1.75")	6785.1	R21	130	2	2.52	foot	
34	24x30 concrete handhole	6801.1	R21	1	0	360	each	
34	BM60P(1.75")	6785.1	R21	175	2	2.52	foot	
35	UFO24	6280.1	R21	360	0	0.8	foot	
35	BM60P(1.75")	6785.1	R21	84	2	2.52	foot	

- ▲ **Sheets** are polygon features that can be used to organize a project into printable areas. Tools are provided in Project Planner to make sheet placement easy using several different preset scales. Sheets can be rotated to fit the flow of a road or cable, and to allow a consistent left-to-right design pattern. Sheets placed within a project can also be exported into a standard PDF format.
- ▲ **Operations** are point features that allow the user to place a work operation at a specified location within the map. Operations allow specific work instructions to be assigned to them along with an unlimited number of material units.



- ▲ **Material units** are the actual units that describe what is needed at a given location within the project. Material units are keyed in at each operation, with an option to pick from a list of previously placed material units to prevent duplicated work.

Unit Summary								
Project: LTE-001								
Description	Part Number	Account Code	Preferred Vendor	Total Waste	Total Used	Total Order	Unit Cost	Total Unit Cost
24x30 concrete handhole	6801.1	R21		0	36	36	\$360.00	\$12,960.00
BM60P(1.25")	6780.1	R21		60	13229	13289	\$2.85	\$37,873.65
BM60P(.75")	6785.1	R21		12	567	579	\$2.52	\$1,459.08
UFO24	6280.1	R21		0	15800	15800	\$0.80	\$12,640.00
				Total Project Cost = \$64,932.73				